



COLOR LUX

Keratin, Argan & Vitamin Complex



COLOR LUX 100ML_CREMA COLORANTE (97 TONOS) · CREAM HAIR COLOR (97 TONES).

P.V.P. ► **3,26€**

UNIT	BOX
1	36

COLOR LUX
Crema colorante 100ml



La crema colorante Color Lux es la innovadora coloración permanente de Design Look potenciada con Vitamin Complex, con acción altamente acondicionadora, regeneradora y protectora del cabello. Su fórmula exclusiva a base de Keratin y Argán con propiedades abrillantadoras, emolientes y antioxidantes, y su complejo vitamínico, con propiedades acondicionadoras, hidratantes y calmantes. Garantiza el máximo respeto por la estructura del cabello, volviéndolo suave, luminoso e hidratado. El uso de pigmentos colorantes de altísima calidad, permite la total cobertura de las canas, realizando colores uniformes y duraderos, con reflejos intensos y vibrantes.

The colouring cream Color lux is the innovative and permanent colouring of Design look that has been strengthened with Vitamin Complex, with an elevated conditioning, regenerating and protecting action for your hair. Its exclusive formula with Argan Oil and Keratin enriched with glossing, softening and anti-oxidizing properties and its vitamin with conditioning, hydrating and soothing properties guarantee the maximum respect of the hair structure to leave hair soft, brilliant and hydrated. The use of high quality coloured pigments gives complete grey cover, long lasting uniform colours with intense and vibrant highlights.



COLOR LUX _ CARTA DE COLOR (97 TONOS) · COLOR CARD (97 TONES).

P.V.P. ► **19,50€**



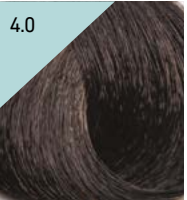



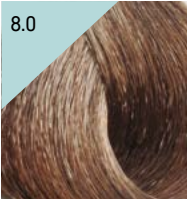


DLPELO1581

UNIT	BOX
1	1

La gama se compone de 82 tonos + 5 correctores, todos mezclables unos con otros en base a las diferentes necesidades técnicas, alargando la gama de colores hasta el infinito. También incluye los 10 colores de las mascarillas Nutri Color Mask.

The range consists of 82 tones + 5 correctors, all mixable with each other depending on the different technical needs, extending the range of colors to the full. It also includes the 10 colours of the Nutri Color Mask.

Natural - Natural

 <p>1.0</p> <p>Negro Black</p> <p>DLPEL01500</p>	 <p>3.0</p> <p>Castaño oscuro Dark chestnut</p> <p>DLPEL01501</p>	 <p>4.0</p> <p>Castaño Medium chestnut</p> <p>DLPEL01502</p>	 <p>5.0</p> <p>Castaño claro Light chestnut</p> <p>DLPEL01503</p>	 <p>6.0</p> <p>Rubio oscuro Dark blonde</p> <p>DLPEL01504</p>	 <p>7.0</p> <p>Rubio Medium blonde</p> <p>DLPEL01505</p>
 <p>8.0</p> <p>Rubio claro Light blonde</p> <p>DLPEL01506</p>	 <p>9.0</p> <p>Rubio clarísimo Very light blonde</p> <p>DLPEL01507</p>	 <p>10.0</p> <p>Rubio platino Blonde platinum</p> <p>DLPEL01508</p>			



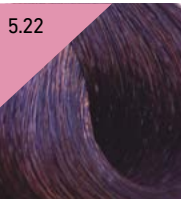

Natural intenso - Intense natural

 <p>5.00</p> <p>Castaño claro intenso Intense light chestnut</p> <p>DLPEL01509</p>	 <p>6.00</p> <p>Rubio oscuro intenso Intense dark blonde</p> <p>DLPEL01510</p>	 <p>7.00</p> <p>Rubio intenso Intense blonde</p> <p>DLPEL01511</p>	 <p>8.00</p> <p>Rubio claro intenso Intense light blonde</p> <p>DLPEL01512</p>	 <p>9.00</p> <p>Rubio clarísimo intenso Intense very light blonde</p> <p>DLPEL01513</p>	 <p>10.00</p> <p>Rubio platino intenso Intense blonde platinum</p> <p>DLPEL01514</p>
----------------------------------------------------------------------------------------------------------------------------------------------------------------------------------------	------------------------------------------------------------------------------------------------------------------------------------------------------------------------------------	------------------------------------------------------------------------------------------------------------------------------------------------------------------------	------------------------------------------------------------------------------------------------------------------------------------------------------------------------------------	-----------------------------------------------------------------------------------------------------------------------------------------------------------------------------------------------	--------------------------------------------------------------------------------------------------------------------------------------------------------------------------------------------

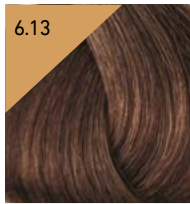
Ceniza - Ash

 <p>5.1</p> <p>Castaño claro ceniza Light chestnut ash</p> <p>DLPEL01515</p>	 <p>6.1</p> <p>Rubio oscuro ceniza Dark blonde ash</p> <p>DLPEL01516</p>	 <p>7.1</p> <p>Rubio ceniza Medium blonde ash</p> <p>DLPEL01517</p>	 <p>8.1</p> <p>Rubio claro ceniza Light blonde ash</p> <p>DLPEL01518</p>	 <p>9.1</p> <p>Rubio clarísimo ceniza Very light blonde ash</p> <p>DLPEL01519</p>	 <p>10.1</p> <p>Rubio platino ceniza Blonde platinum ash</p> <p>DLPEL01520</p>
-----------------------------------------------------------------------------------------------------------------------------------------------------------------------------------	-------------------------------------------------------------------------------------------------------------------------------------------------------------------------------	--------------------------------------------------------------------------------------------------------------------------------------------------------------------------	-------------------------------------------------------------------------------------------------------------------------------------------------------------------------------	------------------------------------------------------------------------------------------------------------------------------------------------------------------------------------------	---------------------------------------------------------------------------------------------------------------------------------------------------------------------------------------

Violeta intenso - Intense violet

 <p>1.10</p> <p>Negro azul Blue black</p> <p>DLPEL01521</p>	 <p>4.22</p> <p>Castaño violeta intenso / Chestnut intense violet</p> <p>DLPEL01522</p>	 <p>5.22</p> <p>Castaño claro violeta intenso / Light chestnut intense violet</p> <p>DLPEL01523</p>	 <p>6.22</p> <p>Rubio oscuro violeta intenso / Dark blonde intense violet</p> <p>DLPEL01524</p>
------------------------------------------------------------------------------------------------------------------------------------------------------------------	------------------------------------------------------------------------------------------------------------------------------------------------------------------------------------------	--------------------------------------------------------------------------------------------------------------------------------------------------------------------------------------------------------	----------------------------------------------------------------------------------------------------------------------------------------------------------------------------------------------------

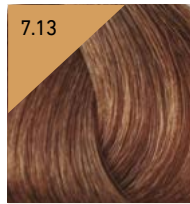
Beige -Beige



6.13

Rubio oscuro beige
Dark blonde beige

DLPEL01525



7.13

Rubio beige
Medium blonde beige

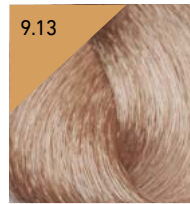
DLPEL01526



8.13

Rubio claro beige
Light blonde beige

DLPEL01527



9.13

Rubio clarísimo beige
Very light blonde beige

DLPEL01528

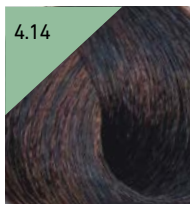


10.13

Rubio platino beige
Blonde platinum beige

DLPEL01529

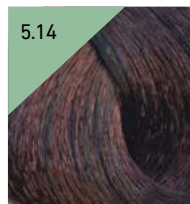
Marrón -Brown



4.14

Cafe
Coffee

DLPEL01530



5.14

Chocolate
Chocolate

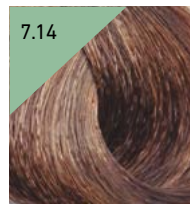
DLPEL01531



6.14

Avellana
Hazelnut

DLPEL01532



7.14

Tabaco
Tobacco

DLPEL01533



8.14

Cacao
Cocoa

DLPEL01534



9.14

Nuez
Walnut

DLPEL01535



10.14

Almendra
Almond

DLPEL01536

Chocolate -Chocolat



4.77

Chocolate oscuro
Dark chocolate

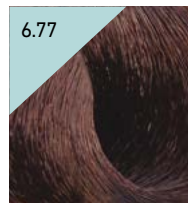
DLPEL01537



5.77

Chocolate extra
Extra chocolate

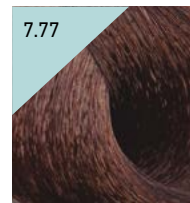
DLPEL01538



6.77

Chocolate fondant
Bitter chocolate

DLPEL01539



7.77

Chocolate gianduia
Gianduia chocolate

DLPEL01540

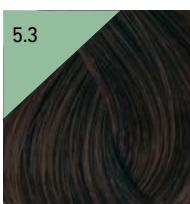


8.77

Chocolate avellana
Hazelnut chocolate

DLPEL01541

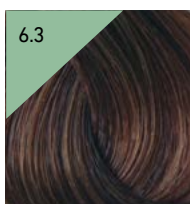
Dorado - Golden



5.3

Castaño claro dorado
Light chestnut golden

DLPEL01542



6.3

Rubio oscuro dorado
Dark blonde golden

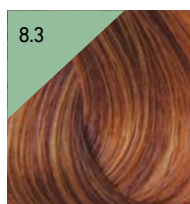
DLPEL01543



7.3

Rubio dorado
Medium blonde golden

DLPEL01544



8.3

Rubio claro dorado
Light blonde golden

DLPEL01545



9.3

Rubio clarísimo dorado
Very light blonde golden

DLPEL01546

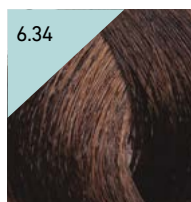


10.3

Rubio platino dorado
Blonde platinum golden

DLPEL01547

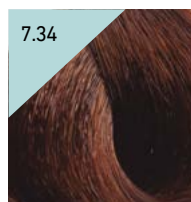
Dorado cobre - Gold copper



6.34

Rubio oscuro dorado cobre / Dark blonde golden copper

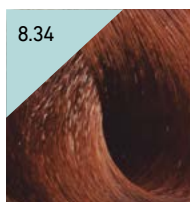
DLPEL01548



7.34

Rubio dorado cobre / Medium blonde golden copper

DLPEL01549



8.34

Rubio claro dorado cobre / Light blonde golden copper

DLPEL01550

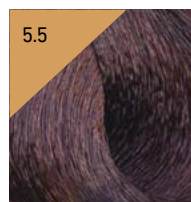
Caoba -Mahogany



4.5

Castaño caoba / Medium chestnut mahogany

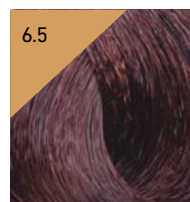
DLPEL01555



5.5

Castaño claro caoba / Light chestnut mahogany

DLPEL01556

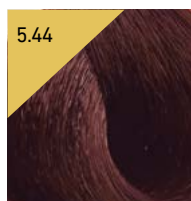


6.5

Rubio oscuro caoba / Dark blonde mahogany

DLPEL01557

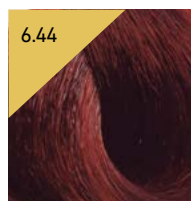
Cobre intenso - Intense copper



5.44

Castaño claro cobre intenso / Light chestnut intense copper

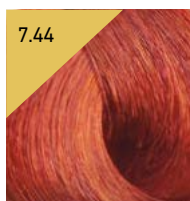
DLPEL01551



6.44

Rubio oscuro cobre intenso / Dark blonde intense copper

DLPEL01552



7.44

Rubio cobre intenso / Medium blonde intense copper

DLPEL01553

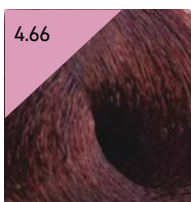


8.44

Rubio claro cobre intenso / Light blonde intense copper

DLPEL01554

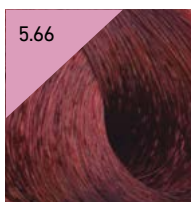
Rojo intenso -Intense red



4.66

Castaño rojo intenso / Chestnut intense red

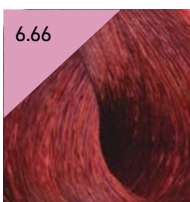
DLPEL01558



5.66

Castaño claro rojo intenso / Light chestnut intense red

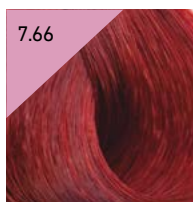
DLPEL01559



6.66

Rubio oscuro rojo intenso / Dark blonde intense red

DLPEL01560

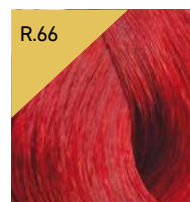


7.66

Rubio rojo intenso / Blonde intense red

DLPEL01561

Rojo vivo -Red booster



R.66

Rojo intenso / Intense red

DLPEL01562

Superaclarantes - Superlightener



11.0

Super rubio platino / Superlight blonde platinum

DLPEL01563



11.1

Super rubio platino ceniza / Superlight blonde platinum ash

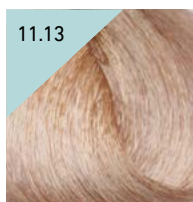
DLPEL01564



11.2

Super rubio platino perla / Superlight blonde platinum pearl

DLPEL01565



11.13

Super rubio platino beige / Superlight blonde platinum beige

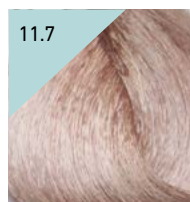
DLPEL01566



11.3

Super rubio platino dorado / Superlight blonde platinum gold

DLPEL01567



11.7

Super rubio platino irisado / Superlight blonde platinum iris

DLPEL01568



12.0

Super rubio platino extra / Superlight blonde platinum extra

DLPEL01569



12.1

Super rubio platino ceniza extra / Superlight blonde platinum ash extra

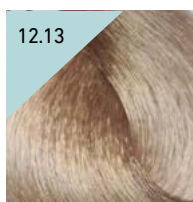
DLPEL01570



12.2

Super rubio platino perla extra / Superlight blonde platinum pearl extra

DLPEL01571



12.13

Super rubio platino beige extra / Superlight blonde platinum beige extra

DLPEL01572




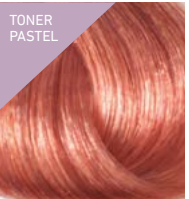



12.7



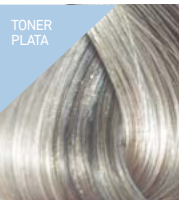
Super rubio platino irisado extra / Superlight blonde platinum iris extra

DLPEL01573


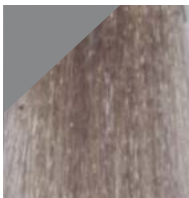

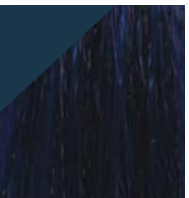

Toners de pastel - Pastel toners

 <p>TONER PASTEL</p> <p>Acero azul Steel blue</p> <p>DLPEL01582</p>	 <p>TONER PASTEL</p> <p>Caramelo Caramel</p> <p>DLPEL01583</p>	 <p>TONER PASTEL</p> <p>Albaricoque Apricot</p> <p>DLPEL01584</p>	 <p>TONER PASTEL</p> <p>Fresa Strawberry</p> <p>DLPEL01585</p>	 <p>TONER PASTEL</p> <p>Lia Lilac</p> <p>DLPEL01586</p>
-----------------------------------------------------------------------------------------------------------------------------------------------------------------	------------------------------------------------------------------------------------------------------------------------------------------------------------	---------------------------------------------------------------------------------------------------------------------------------------------------------------	------------------------------------------------------------------------------------------------------------------------------------------------------------	-------------------------------------------------------------------------------------------------------------------------------------------------------

Toners de plata - Silver toners.

 <p>TONER PLATA</p> <p>Plata Silver</p> <p>DLPEL01576</p>	 <p>TONER PLATA</p> <p>Gris tortola Dove grey</p> <p>DLPEL01588</p>	 <p>TONER PLATA</p> <p>Gris lila Grey lilac</p> <p>DLPEL01589</p>
-------------------------------------------------------------------------------------------------------------------------------------------------------	-----------------------------------------------------------------------------------------------------------------------------------------------------------------	---------------------------------------------------------------------------------------------------------------------------------------------------------------

Correctores - Intensifier

 <p>Neutro Neutral</p> <p>DLPEL01575</p>	 <p>Plata Silver</p> <p>DLPEL01574</p>	 <p>Violeta Violet</p> <p>DLPEL01577</p>	 <p>Azul Blue</p> <p>DLPEL01578</p>	 <p>Rojo Red</p> <p>DLPEL01579</p>
----------------------------------------------------------------------------------------------------------------------------------------	--------------------------------------------------------------------------------------------------------------------------------------	----------------------------------------------------------------------------------------------------------------------------------------	-----------------------------------------------------------------------------------------------------------------------------------	------------------------------------------------------------------------------------------------------------------------------------



COLORACIÓN DIRECTA / DIRECT COLOR

COLOR LUX CRAZY

Amarillo · Rojo · Rosa · Violeta · Blue · Turquesa · Green · Silver · Antracita · Neutral Mix

Yellow · Red · Pink · Violet · Blue · Turquoise · Green · Silver · Anthracite · Neutral Mix



COLORACIÓN DIRECTA / 150ML · DIRECT COLOR.

P.V.P. ► 7,98€

UNIT	BOX
1	4

DLPEL42903	AMARILLO # YELLOW
DLPEL42904	ROJO # RED
DLPEL42905	ROSA # PINK
DLPEL42906	VIOLETA # VIOLET
DLPEL42907	AZUL # BLUE
DLPEL42908	TURQUESA # TURQUOISE
DLPEL42909	VERDE # GREEN
DLPEL42911	PLATA # SILVER
DLPEL42910	ANTRACITA # ANTHRACITE
DLPEL42912	NEUTRAL MIX # NEUTRAL MIX

Coloración directa en gel sin oxidación y sin amoníaco. **Uso:** Aplicar el **COLOR LUX CRAZY** sobre el cabello decolorado y dejar actuar durante 12 minutos. Enjuagar el cabello abundantemente con agua y proceder a aplicar el champú. **Advertencia:** mantener el producto fuera del alcance de los niños. Evitar el contacto con los ojos. En caso de contacto con los ojos, lavar cuidadosamente con agua y contactar con un médico. No utilizar para teñir pestañas o cejas. Para cualquier inquietud en cuanto a la sensibilidad personal, se recomienda consultar con un médico. Uso profesional.

Oxidant free and ammonia free, direct color in gel. **Use:** apply **COLOR LUX CRAZY** on bleached hair and leave in for 12 minutes. Rinse your hair thoroughly and proceed with a shampoo. **Warnings:** keep out of the reach of children. Avoid contact with eyes. If the contact has already happened wash them thoroughly with water and contact your doctor. Do not use to color eyelashes or eyebrows. For any questions on personal sensitivity, please consult a doctor. Professional use.

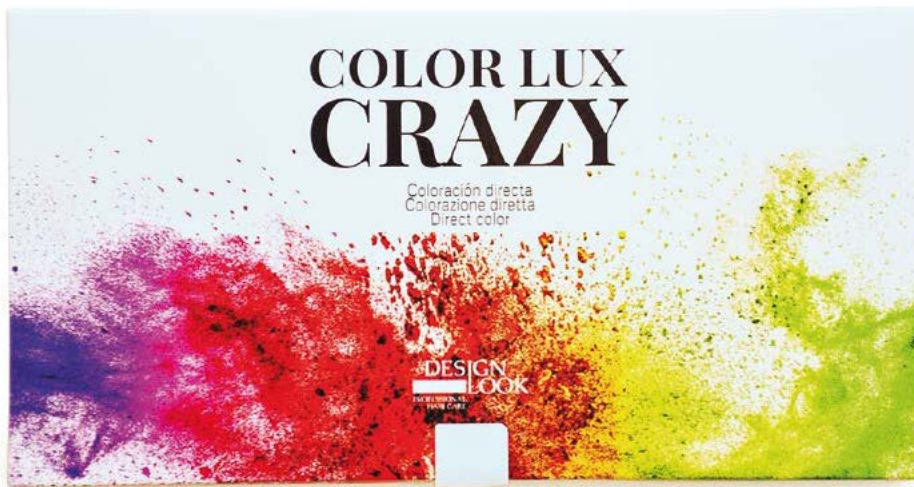


COLOR LUX CRAZY_CARTA DE COLOR (10 TONOS) · COLOR CARD (10 TONES).

P.V.P. ► 14,95€

DLPEL43031

UNIT	BOX
1	1



Color Lux Crazy



Amarillo
Yellow.

DLPEL42903



Rojo
Red.

DLPEL42904



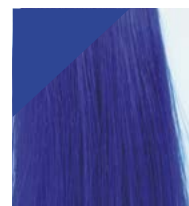
Rosa
Pink.

DLPEL42905



Violeta
Violet.

DLPEL42906



Azul
Blue.

DLPEL42907



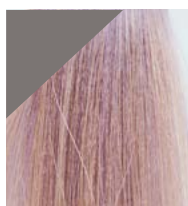
Turquesa
Turquoise

DLPEL42908



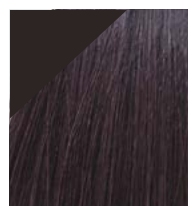
Verde.
Green.

DLPEL42909



Plata.
Silver.

DLPEL42911



Antacita.
Anthracite.

DLPEL42910



Neutral mix.
Neutral mix.

DLPEL42912

MASCARILLAS DE COLOR 4 EN 1 / 4 IN 1 COLOR MASK

NUTRI COLOR MASK 4 EN 1

Rojo intenso · Chocolate · Plata · Violeta intenso · Cobre intenso · Negro acero · Rosa · Rojo Fuego · Lavanda · Mandarina

Intense red · Chocolate · Silver · Intense violet · Intense copper · Steel black · Pink · Red fire · Lavender · Mandarin



DESIGN
LOOK
PROFESSIONAL
HAIR CARE

MASCARILLAS DE COLOR 4 EN 1 / 120ML - 4 IN 1 COLOR MASKS.

P.V.P. ► 5,15€

UNIT	BOX
1	6

DLPEL43125	ROJO INTENSO .66 - INTENSE RED .66
DLPEL43130	CHOCOLATE .77 - CHOCOLATE .77
DLPEL43126	PLATA 11.00 - SILVER 11.00
DLPEL43127	VIOLETA INTENSO .22 - INTENSE VIOLET .22
DLPEL43128	COBRE INTENSO .44 - INTENSE COPPER .44
DLPEL43129	NEGRO ACERO 1.0 - STEEL BLACK 1.0
DLPEL43131	ROSA 0.05 - PINK 0.05
DLPEL43132	ROJO FUEGO .600 - RED FIRE .600
DLPEL43133	LAVANDA 0.02 - LAVANDER 0.02
DLPEL43134	MANDARINA .400 - MANDARIN .400

Mascarilla de Color Formula 4 en 1. Nutre, intensifica, ilumina e hidrata. Uso: Lavar el cabello y secar con toalla, utilizar guantes de un solo uso extendiendo la crema con la ayuda de un peine sobre el cabello. Dejar actuar 3-5 minutos para avivar el color. Aumentando el tiempo de exposición hasta un máximo de 15 minutos, aumentará la intensidad del reflejo. Enjuagar abundantemente.

Color mask Formula 4 in 1. It nourishes, intensifies, illuminates and moisturizes. Use: Wash hair and towel dry, use single use gloves by extending the cream with the aid of a comb on the hair. Leave on for 3-5 minutes to brighten the color. Increasing the exposure time to a maximum of 15 minutes will increase the intensity of the reflex. Rinse thoroughly.



NUTRI COLOR MASK 4 EN 1.
CARTA DE COLOR (10 TONOS) · COLOR CARD (10 TONES).

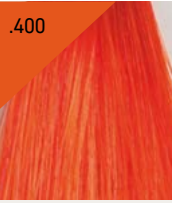
P.V.P. ► **8,28€**

DLPEL01605

UNIT	BOX
1	1



Nutri Color Mask 4 en 1

.66 	.77 	11.00 	.22 	.44 
Rojo intenso. Intense red. DLPEL43125	Chocolate. Chocolate. DLPEL43130	Plata. Silver. DLPEL43126	Violeta intenso. Intense violet. DLPEL43127	Cobre intenso. Intense copper. DLPEL43128
1.0 	0.05 	.600 	0.02 	.400 
Negro acero. Steel black. DLPEL43129	Rosa. Pink. DLPEL43131	Rojo fuego. Red fire. DLPEL43132	Lavanda. Lavender. DLPEL43133	Mandarina. Mandarin. DLPEL43134

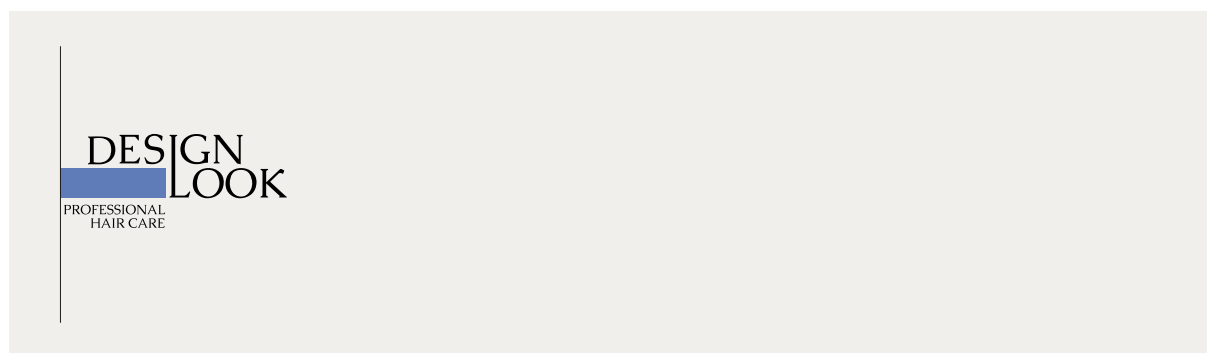
MASCARILLAS COLOR / COLORS MASK



MASK

Rojo intenso · Chocolate · Plata · Violeta intenso · Cobre intenso · Negro

Intense red · Chocolate · Silver · Intense violet · Intense copper · Black



MASCARILLAS DE COLOR / 300ML - COLORS MASKS / 300ML.

P.V.P. ► 7,95€

UNIT	BOX
1	6

DLPEL42896	ROJO INTENSO .66 - INTENSE RED .66
DLPEL42902	CHOCOLATE .77 - CHOCOLATE .77
DLPEL42898	PLATA 11.00 - SILVER 11.00
DLPEL42899	VIOLETA INTENSO .22 - INTENSE VIOLET .22
DLPEL42900	COBRE INTENSO .44 - INTENSE COPPER .44
DLPEL42901	NEGRO ACERO 1.0 - STEEL BLACK 1.0

Mask es la gama de mascarillas colorantes de Design Look, que en pocos minutos regenera el color natural o cosmético de los cabellos, brindando con intensidad y aportando la correcta nutrición. **Uso:** lavar los cabellos con el champú Design Look más indicado y retirar el exceso de agua con una toalla. Ponerse los guantes de un solo uso, aplicar una adecuada cantidad de producto, masajear delicadamente y repartir con un peine de púas anchas. Dejar actuar de 3 a 5 minutos en base a la intensidad deseada (aumentando el tiempo de exposición hasta un máximo de 15 minutos, aumentará la intensidad del reflejo). Enjuagar cuidadosamente. El producto no ensucia, sin embargo recomendamos evitar aplicar el producto directamente sobre el cuero cabelludo.

Mask is the range of Design Look color masks that in just a few minutes restores intensity to both natural and cosmetic colours leaving hair full of shine and hydrated. **Use:** wash hair with the recommended Design Look shampoo and dry excess water with a towel. Wear disposable gloves, apply a suitable amount of product, rub gently and distribute with a wide-tooth comb. Leave for 3 to 5 minutes, according to the required intensity (increasing the time up to a max. of 15 minutes will increase the highlighting intensity). Rinse thoroughly. The product does not dirty, but avoid applying the product directly on the scalp.

Marca específicamente desarrollada para ojos y cejas. Nuestra lujosa colección combina pigmentos ricos para crear una experiencia sin igual. Nuestra misión es inspirar a cada mujer a ser audaz, bella e icónica. **Crea tu look, define tu mundo.**

*Specifically brand developed for eyes and eyebrows. Our luxurious collection combines rich pigments to create an experience without equally. Our mission is to inspire every woman to being bold, beautiful and iconic. **Believe your look, define your world.***

COLORACIÓN PESTAÑAS - CEJAS / COLOURING EYEBROW - EYELASH

EYEBROW & EYELASH TINT

Tinte pestañas y cejas



Cada tubo de tinte viene con un práctico aplicador.

Every tube of dye comes with a practical applicator.

TINTES PARA PESTAÑAS Y CEJAS SUMITA / 15ML · SUMITA DYE FOR EYELASHES AND EYEBROWS.

P.V.P. ► **9,95€**

DLSUM02067	NEGRO 1 - BLACK 1
DLSUM02068	MARRÓN 2 - BROWN 2
DLSUM02070	MARRÓN CLARO 3 - LIGHT BROWN 3
DLSUM02069	GRAFITO 4 - GRAPHITE 4

UNIT	BOX
1	12

Se obtienen pestañas largas, oscuras y llenas. Cejas perfectamente definidas. Dura hasta 6 semanas. Contenido para unas 30 aplicaciones. Los cuatro tintes se pueden mezclar entre sí para obtener nuevos tonos. Podrás elegir entre los cuatro tintes estándar:

- NEGRO, es un tono negro intenso y rico. Crea un aspecto audaz y hermoso para las pestañas y es ideal para cabello negro oscuro.
- MARRÓN, es un marrón profundo y versátil. Crea un aspecto natural ideal para morenos medianos y oscuros.
- MARRÓN CLARO, es una variación de tono más claro del tinte marrón. Crea un aspecto suave y natural para las morenas ligeras a moderadas.
- GRAFITO, está diseñado específicamente para cubrir de manera natural oscureciendo sutilmente el cabello gris o canoso.

Uso: Antes de aplicar el tinte use la crema protectora de la piel y los papeles de protección para los ojos según las instrucciones. Mezcla 2 cm de tinte y 10 gotas de líquido oxidante para crear una pasta cremosa, aplicar a las pestañas y las cejas, dejar actuar 5-10 minutos, eliminar el tinte usando algodón y agua.

Long, dark and full eyelashes. Perfectly defined eyebrows. Lasts up to 6 weeks. Content; sufficient for approximately 30 applications. Can be mixed with brown and light brown shades to create an ashier tone. You will be able to choose between four standard dyes:

- BLACK, is an intense, rich black hue. It creates a bold, beautiful look for the lashes and is ideal for clients with dark black hair.
- BROWN, is a deep, versatile brown. It creates a natural look ideal for medium to dark brunettes.
- LIGHT BROWN, is a lighter shade variation of the brown tint. It creates a soft natural look for light to medium brunettes.
- GRAPHITE, is specifically designed to naturally cover and subtly darken greying or white hair.

Use: Preparation; use Skin Protection Cream and Eye protection papers according to instructions. Mix 2 cm of tint and 10 drops of Oxidant liquid to create a creamy paste. Apply to eyelashes and eyebrows. Leave on for 5-10 minutes. Remove by using cotton and water.